

Cervical vertebrae

Thoracic vertebrae

Lumbar vertebrae

Sacrum (5 pieces)

Coccyx (4 pieces)

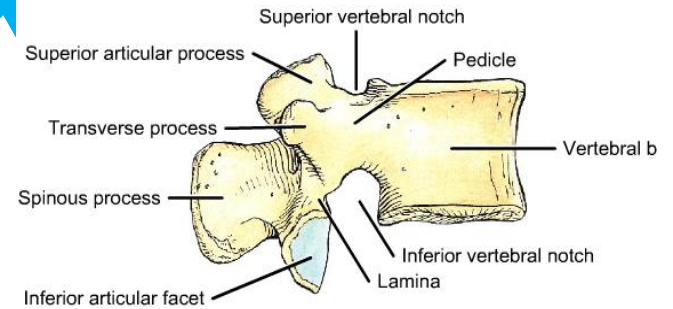
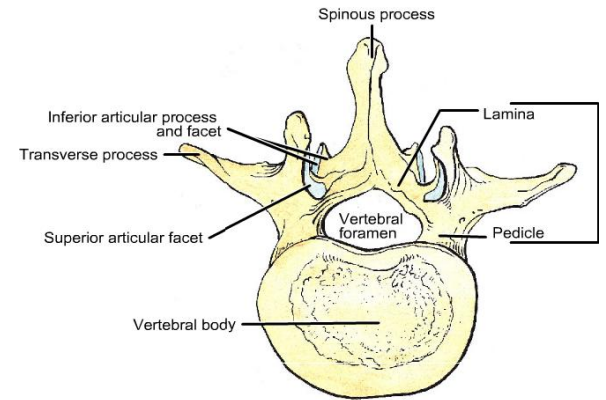
The vertebral column

comprises 24 separate •
(presacral) vertebrae and two
composite vertebrae, the
sacrum and coccyx; of the 24
separate vertebrae,

**-12 support ribs
(thoracic),**

**-7 are in the neck
(cervical)**

**-5 are in the lumbar
region (lumbar);**



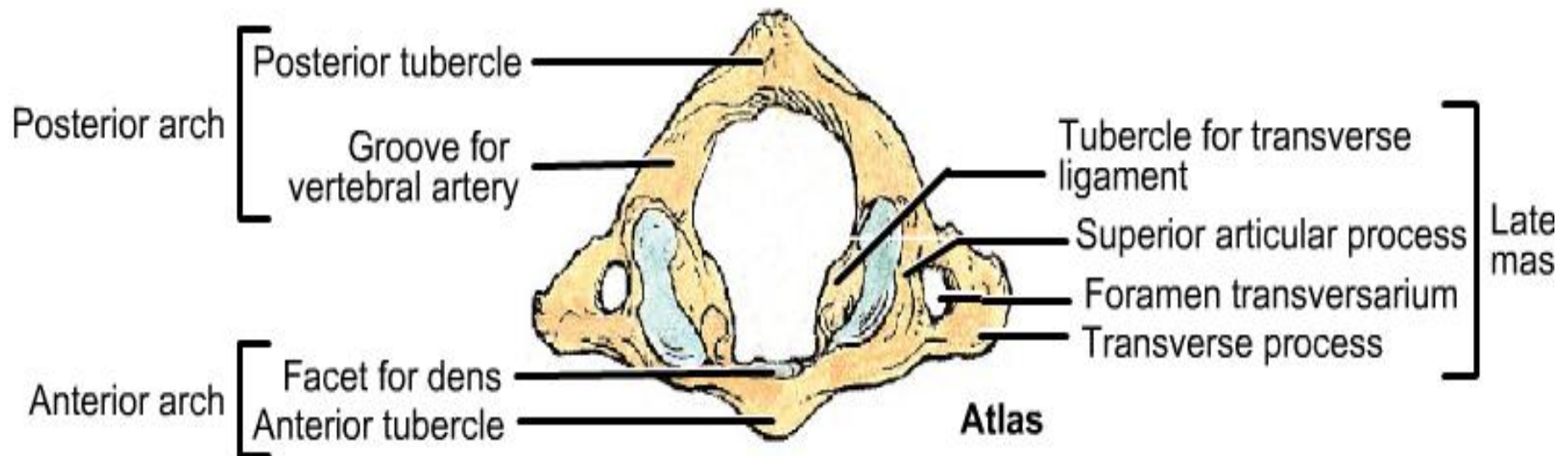
Cervical vertebrae :

Atypical v. (c1+c2+C7)

C1: -no body (**Dens: process from C2**)

-2 lateral masses

-2 anterior and posterior arch (**laminae and pedicles**)



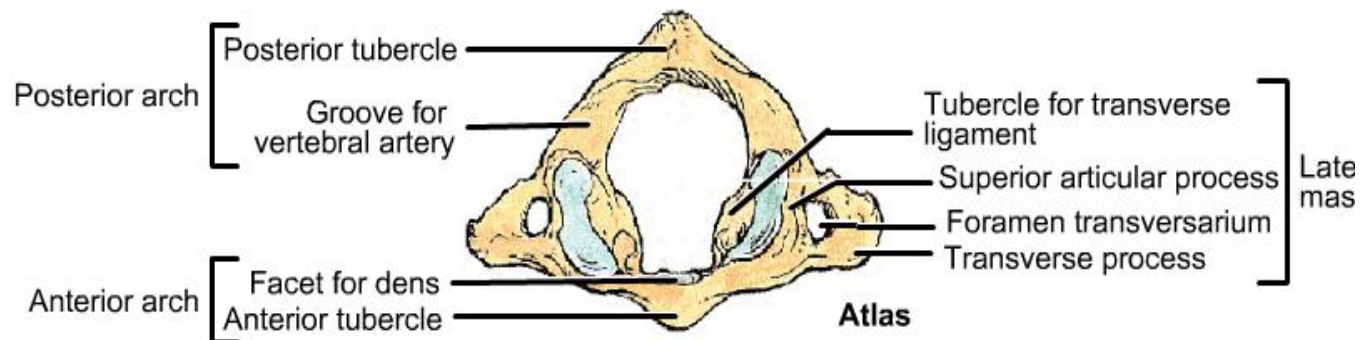
-spinshape replaced by posterior tubercle

-lateral masses (superior: concave shape like kidney

(inferior : circle in shape)+ and have 2 Medial projections for transvers

l igament

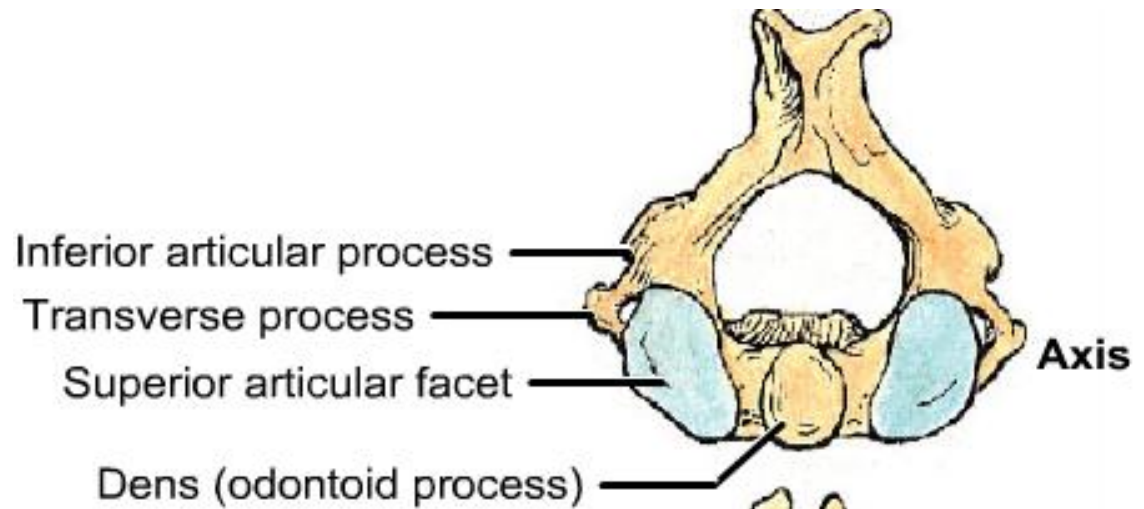
- Long transvers process (c1+c7)



C2: •

Dens: articulate with arch of C1 by transverse l. •

- have superior and inferior articular facets •
- lamina thickened carry massive spine •
- transverse process have no anterior tubercle •
- foramen transversarium 90° under superior proc •
- spine is long non bifid •

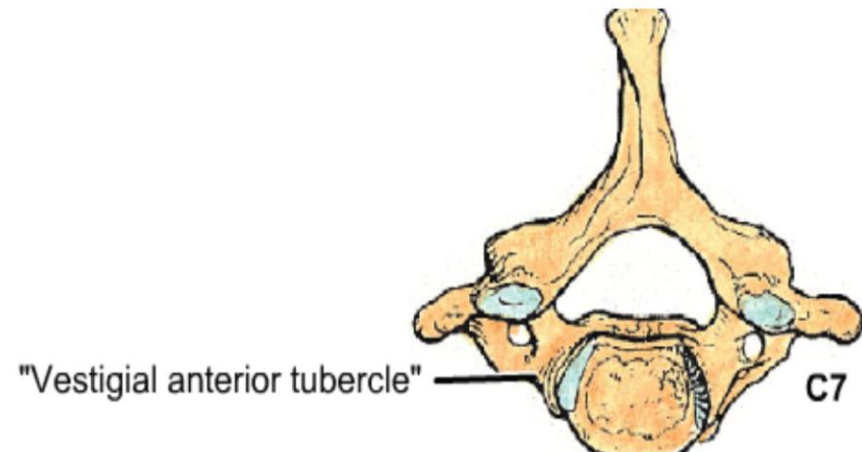


C7;

-spin is long(vertebra prominens) un bifid

-Transverse process lack anterior tubercle -

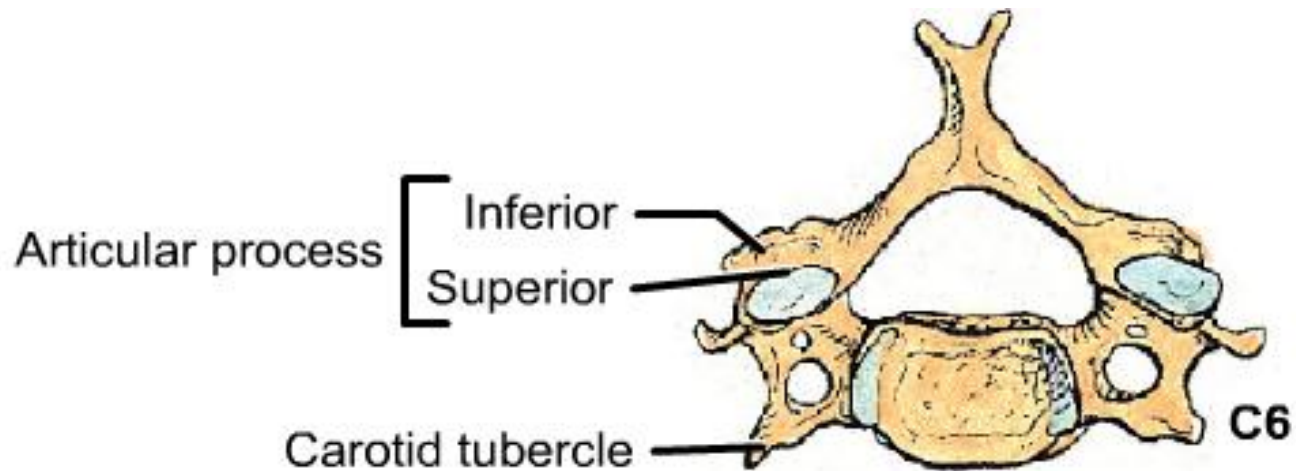
-Foramen transversarium transmit vein only



Palpable parts of c.v. •

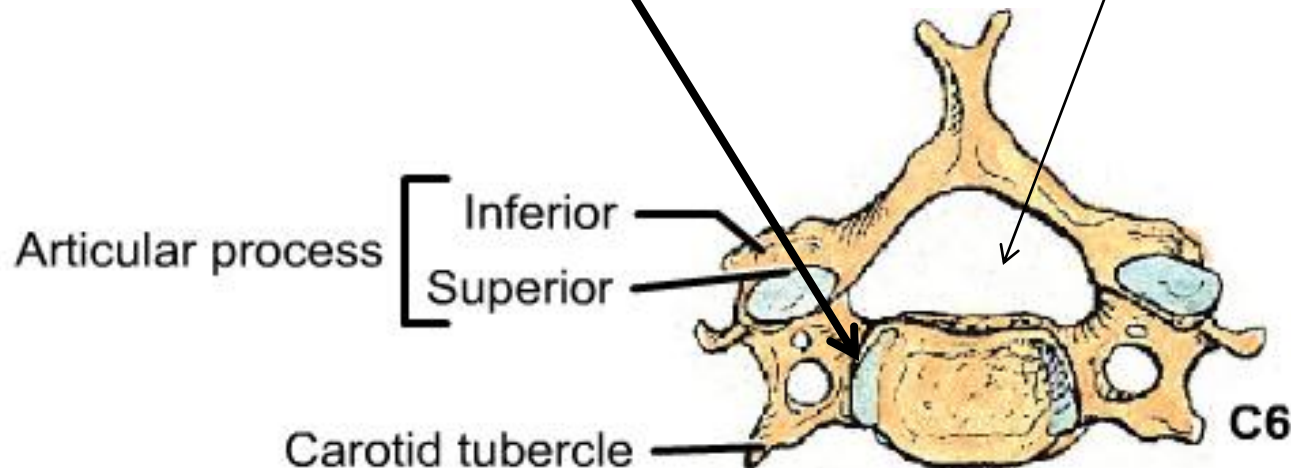
Spine of C2 5 cm below ext.occ. Protuber. •

Spine of C7. (vertebral prominence) •

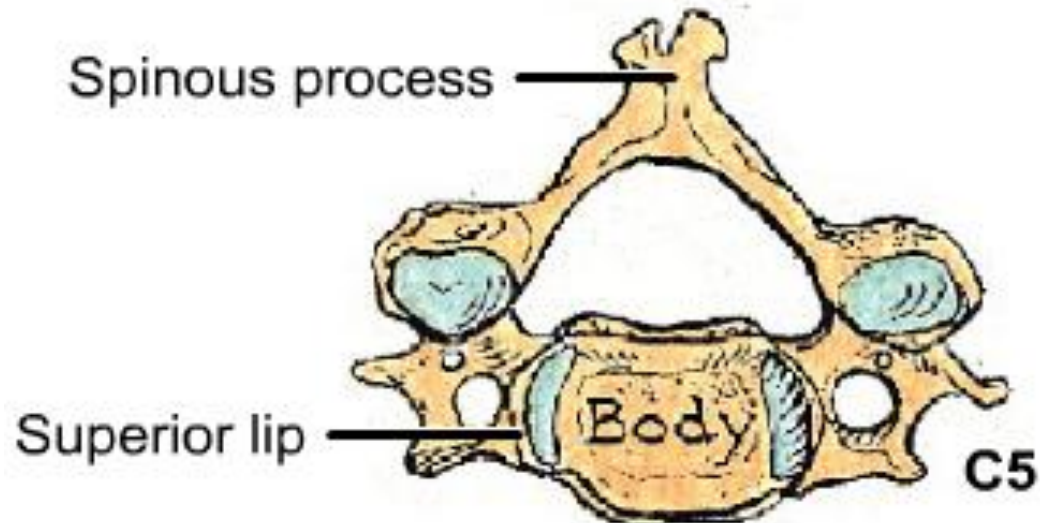


Typical cervical vertebrae (C3-C6)

- =vertebral bodies transversely elongated,
- =their superior surfaces with lateral lips,
- =vertebral foramina are large & triangular;
- =The superior and inferior vertebral notches are nearly equal in depth;
- =The spinous processes are short and bifid,;



=The transverse processes are short, perforated, and end laterally in anterior and posterior tubercles with a gutter between them; those of the atlas and C7 are long and have one (posterior) tubercle, as does the axis, but it is short.



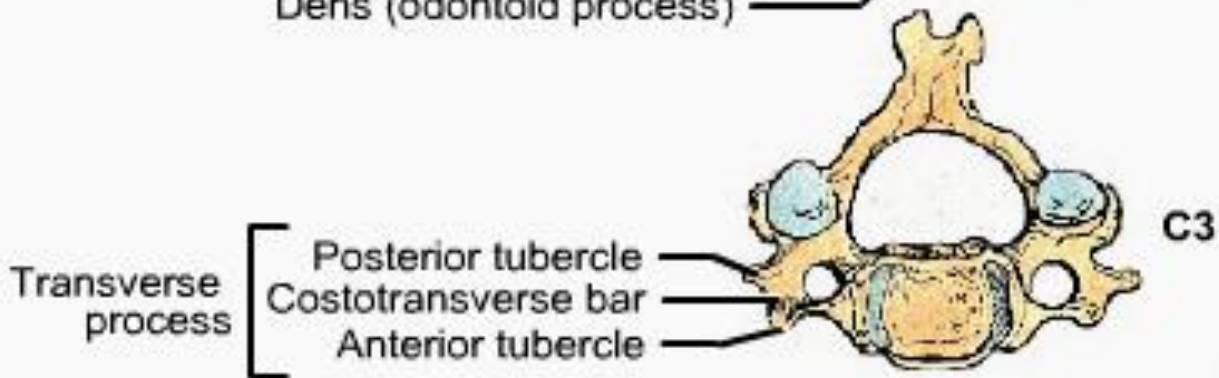
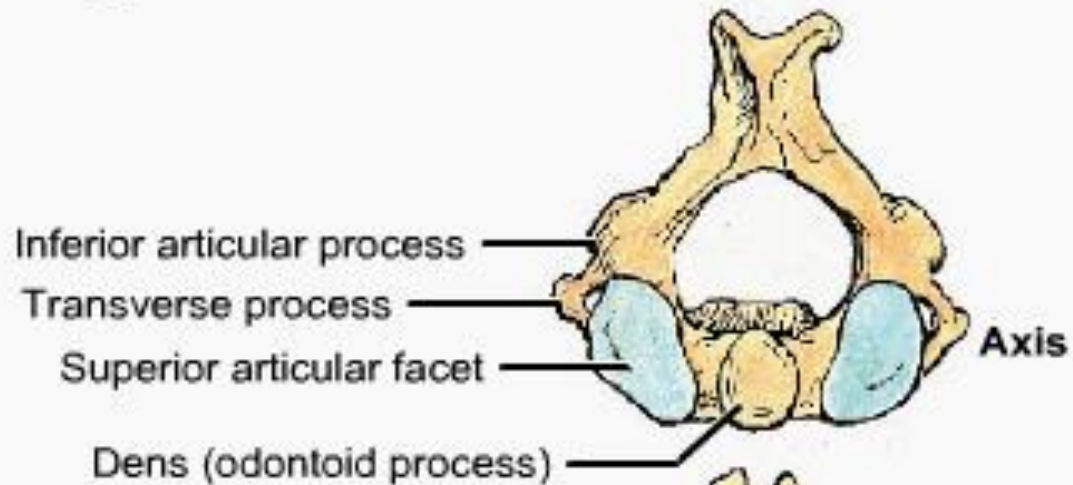
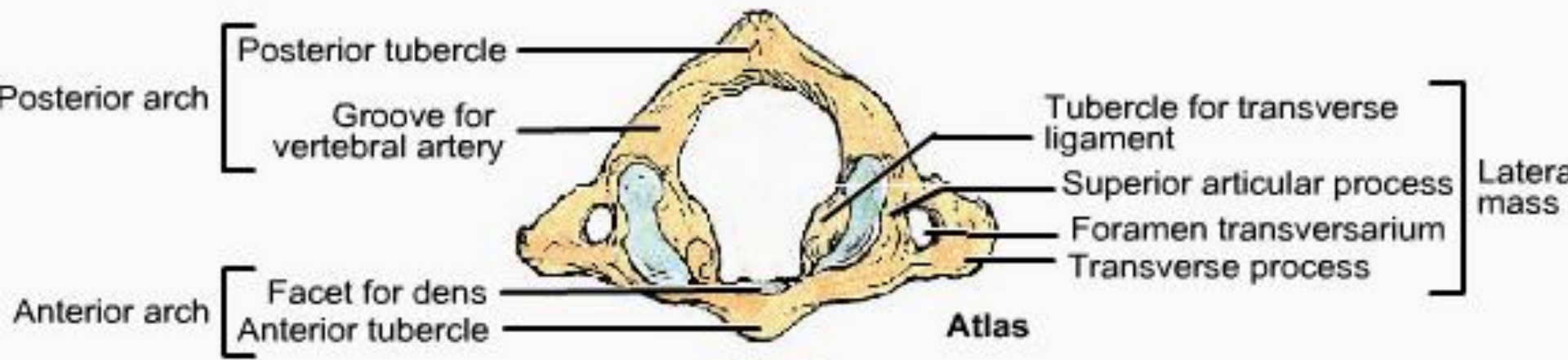
Transvers foramen transmit : •

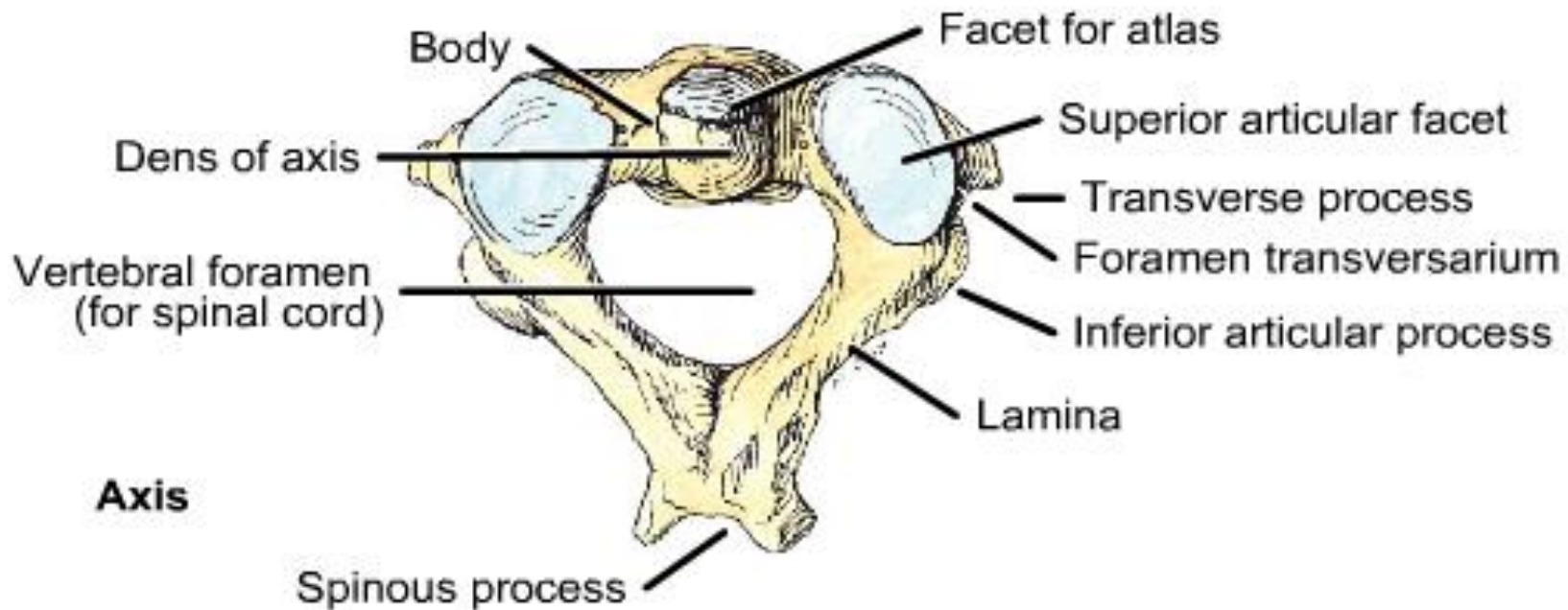
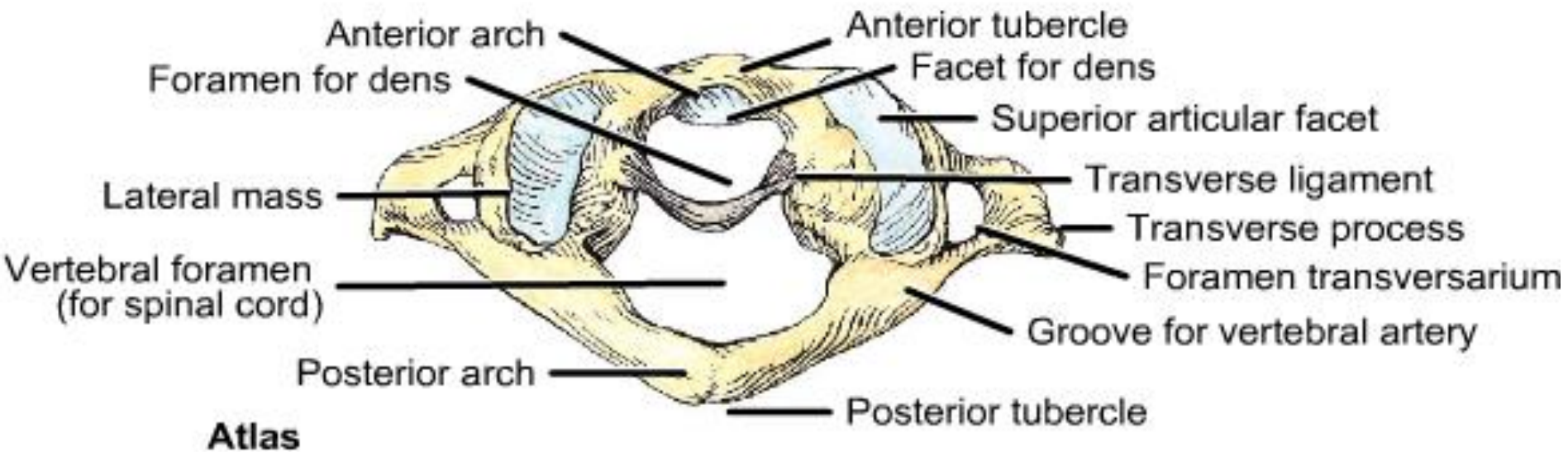
Artery •

Vein •

Sympathetic plexus

Cv7 transmit vein only





PREPERED BY :
Prof. Dr. Talib Jawad
DEAN OF COLLEGE OF MEDICINE
DYIALA UNIVERSITY

